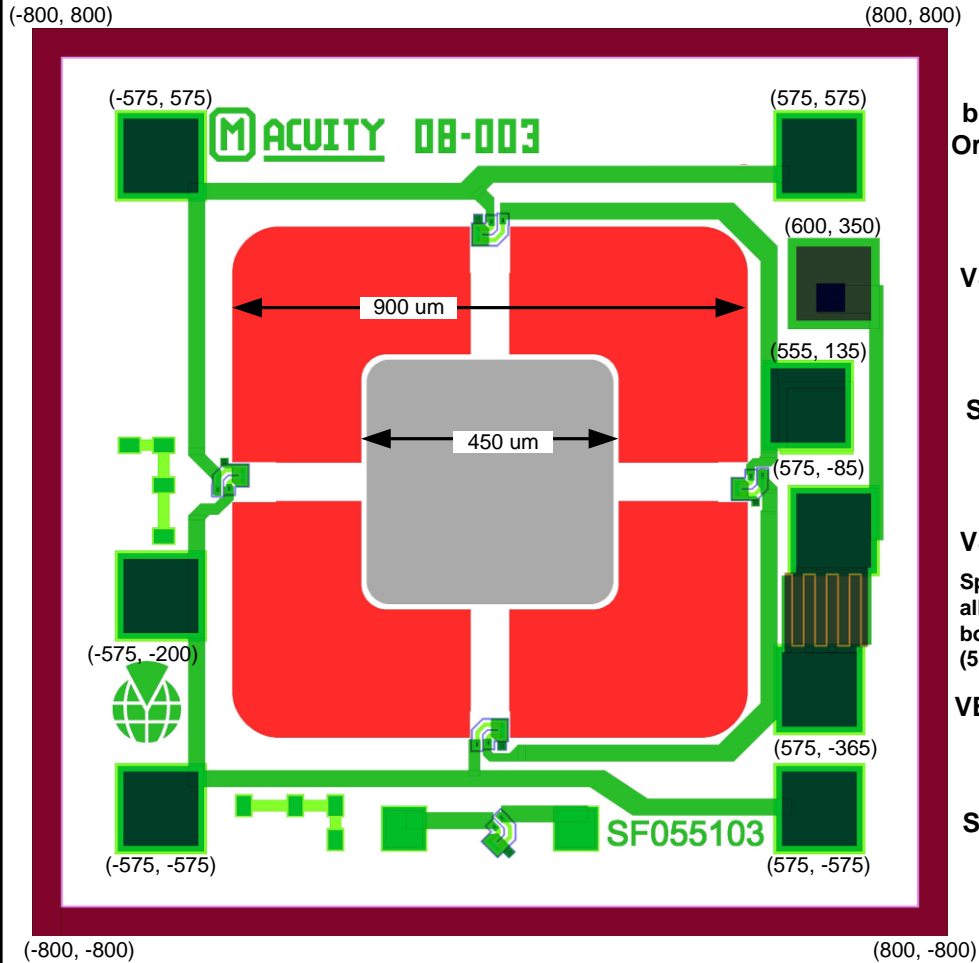
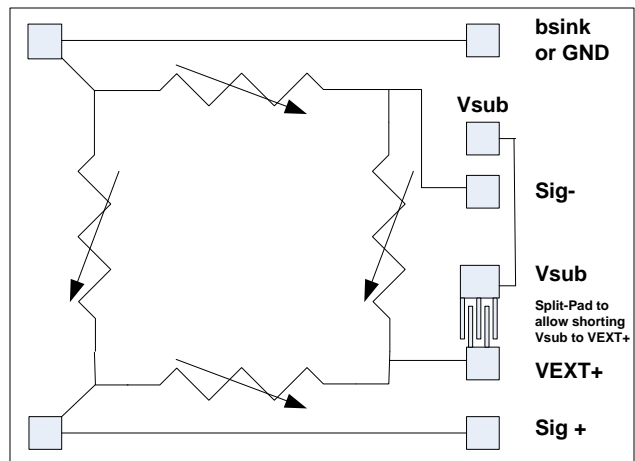
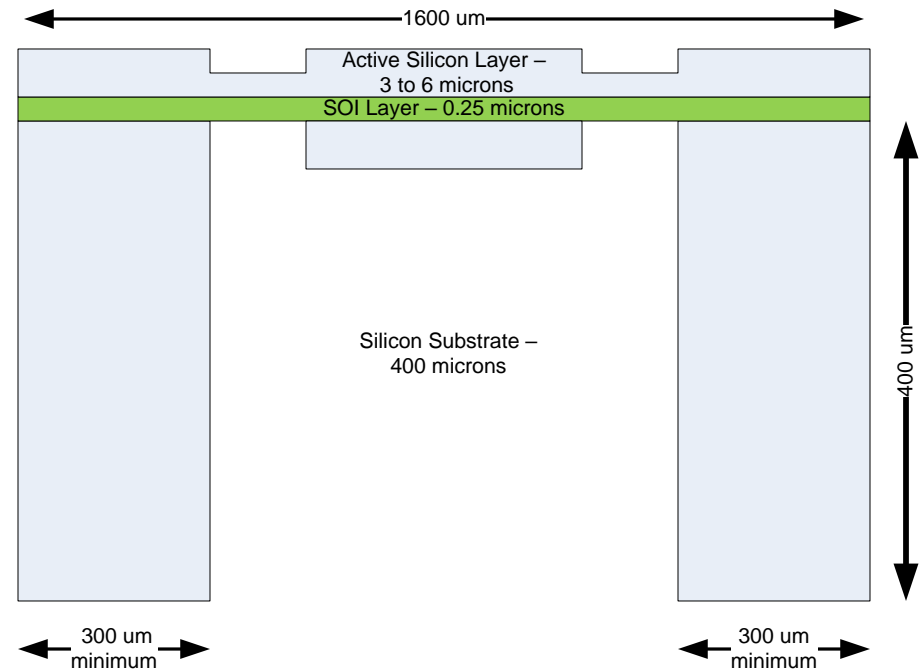


Dimensions



NOTE:

1. All dimensions are in μm .
2. The coordinates for the center of each pad, shown as (XXX,YYY), are with respect to the center of the die.
3. Pad size openings are $130 \times 130 \mu\text{m}$.
3. + Signal increases and - Signal decreases when pressure is applied from the top of the die.
4. Closed Bridge Configuration.
5. Compatible with direct wirebonds to ASICs such as the ZMD31010, ZMD31014, and ZMD31050.
6. Acuity recommends wirebonding the VSUB connection to the VEXT+ connection. This can be achieved with one bond using the split pad.



Equivalent Circuit and Pad-outs

Acuity Incorporated
Fremont CA 94539 USA
www.acuitymicro.com



Acuity Incorporated

AC3031 Series
Dimensions and Pin-outs

Date: 28 Oct 2015

By: HVAllen

Revision: A